

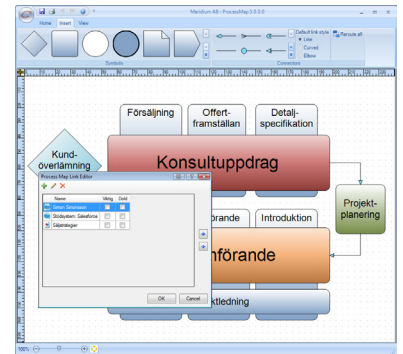
ProcessMap

Establishing a management system
has never been easier



Operational management system based on Sharepoint and ProcessMap

Steering the company's operation towards specific goals through well designed strategy is central to all organizations. The strategy is broken down into processes, procedures and instructions. Through continuous improvements the organization's competitiveness and profitability increases. Sharepoint and ProcessMap is the IT support required to create an optimal operational system with which Your company can grow without the need of major development projects. Expensive special programs easily becomes isolated islands that only the company's experts understand. With the help from ProcessMap and Sharepoint it is possible to create an internal tool that provides support and guidance in the daily work of Your company's employees.



With Sharepoint and ProcessMap the following pieces can be added to your company's intranet.

- Document management
- Case management
- Visualization of processes
- Derogation management
- Project management
- Quality management
- Management by objectives (KPI, Balanced Scorecard)

Easy to create and maintain

ProcessMap is a module for Sharepoint and EPIServer, and is used to draw graphic processes which can be linked to various sources of internal and external content such as locations on your website and intranet or documents in an external document management system. When following linked processes the map will still be visible for you so you can keep the overview of your processes. ProcessMap supports versioning of processes and approval flows.

Easy to customize

ProcessMap comes with a set of standard symbols that complies with the standard BPMN 1.2 and it is easy to create new symbols. By creating customized webparts in Sharepoint You can add functionality according to Your company's needs and wishes.

A brand new drawing tool

The latest version of ProcessMap has a brand new drawing tool that require no separate installation. We used the inspiration from Microsoft Powerpoint 2007 when designing the tool. Just as previous versions of ProcessMap, the drawing tool can be adjusted so the process descriptions follows the graphical guidelines no matter who's drawing the process.

Features

- Userfriendly, web-based drawing tool, completely integrated in Sharepoint's editing mode .
- Link main processes to underlying processes, procedures and other support systems such as project management and case management.
- Support for handling broken links in the process descriptions
- Language support according to .net's language standard
- Search results for the content of the process descriptions

System requirements

- Sharepoint (MOSS 2007 or WSS 3.0) or EPIServer CMS 4.62 or higher

Interested?

ProcessMap can be ordered through processmap@meridium.se. You can also order through your partner/supplier

Try it first?

Register at www.meridium.se to order a test license, or call us at +46-480-42 60 60 if you have any questions about ProcessMap.

Microsoft
GOLD CERTIFIED
Partner
Meridium are Gold partners to Microsoft

Custom Development Solutions
Data Management Solutions

VASAKRONAN

Vasakronan is the largest real estate company in Sweden, with a property portfolio valued to approximately 73 billion. They mainly offer facilities for offices and shops in Sweden's metropolitan regions - Stockholm, Uppsala, Gothenburg, Malmö and Lund. Dwellings are mainly in Uppsala, but also in Stockholm and Gothenburg.

Vasakronan chose ProcessMap

Swedens largest real estate company streamlined their work with processes on the organizations intranet

When the AP Properties, current Vasakronan, were to introduce a new intranet containing real estate and user portals, it was decided that also "Kompassen" - the part of the intranet containing processes, utilities, and support processes, templates and other support related to their daily work - would be upgraded. Since the choice of platform fell on SharePoint it was required that "Kompassen" would be integrated into the environment. In the choice between developing themselves, or build in an application the choice fell on Meridium and the application ProcessMap. Meridium implemented the tool ProcessMap to meet the existing needs. The project started in 2007 and was launched in August 2009. After AP Properties bought Vasakronan the entire company took on the name Vasakronan, and the two companies' intranet site went through a phase of integration in which they would merge.

Now it was a large challenge for Vasakronan to get it all into one organization and also to document everything in a structured way. Vasakronan needed a user-friendly tool to clearly demonstrate processes in order to better communicate the structures. It should also make it easier to find weaknesses and see what needed to be improved. The objectives were to ensure the quality of business-critical areas of the business and to give employees the opportunity to systematically share knowledge. It would also be a platform for further development of operations. The choice was easy when Meridium came up with the solution ProcessMap.

"It is important that the process owner can engage in the process work and put a large amount of time into it. It actually is a challenge to cope with the ordinary work at the same time," says Sören Sandell, CIO at Vasakronan.

Vasakronan worked along a plan of action: they would identify working method, processes, and the cutting activity descriptions. An important part of this work also lay in identifying and developing support tools such as help documents. After that they worked the results into "Kompassen" at the intranet "Sofia". The aim was to spread knowledge, training and practice, and to administer and improve work procedures and support tools. Based on these key concepts Meridium integrated ProcessMap into the intranet "Sofia".

Process management is now easier to manage than before. This is a basic requirement to work up clear process descriptions. Those who work with the "Kompassen" on a daily basis experience that ProcessMap has facilitated the process development. Now Vasakronan has a close dialogue with Meridium since they are still in a development phase. They have begun the documentation of processes and there is a constant work in progress.

A major benefit of ProcessMap, Vasakronan finds, is that you can graphically present processes, and navigate easily. Now it's easy to visualize processes and possible to skip through images and links. It has also become easier to initiate flow and the people who work with ProcessMap experience a clear simplification of the work.

"It is important to define the process map and have someone to be responsible for each process. Process, region, function - we must ensure that all parts fit together," says Sören Sandell.

About working with Meridium Sören Sandell says:

"It has worked out great. We have had both personal meetings and telephone conferences when we looked at a screen together. They are talented, professional and delivered very well. Meridium is nice to work with and have talented consultants."

Features in ProcessMap

- Create processmaps
- Link processes to internal and external content
- Comes with a set of standard symbols compliant with the standard BPMN
- Easy to create and design tailored symbols
- Support for all kinds of process structures
- Easy to integrate with your company's operational management system

Interested?

ProcessMap can be ordered at sales@meridium.se. or through your partner/supplier

Online demo?

Interested in how ProcessMap works? Book an online demo at www.meridium.se or call us at +46-480-42 60 60.



Custom Development Solutions
Data Management Solutions

Meridium are gold partners to Microsoft